

BOARD OF COOPERATIVE EDUCATIONAL SERVICES  
**REPORT CARD**



- Career and Technical Education
- Alternative Education
- Special Education
- Technology Services
- School Library System Services
- Adult Career and Technical Education
- Adult Basic Education
- Professional Development
- Student Achievement
- 2006-2007 Expenses

**2006-2007**

**Albany-Schoharie-Schenectady-Saratoga  
Board of Cooperative Educational Services**

**Albany-Schoharie-Schenectady-Saratoga  
Board of Cooperative Educational Services  
2006-2007 Report Card**

**Table of Contents**

	<b>Page</b>
<b>Component/Non-Component District List.....</b>	<b>ii</b>
<b>Indicators of BOCES Performance</b>	
<b>Career &amp; Technical Education.....</b>	<b>1-2</b>
<b>Alternative Education.....</b>	<b>3</b>
<b>Adult Career &amp; Technical Education.....</b>	<b>4</b>
<b>Adult Basic Education.....</b>	<b>4</b>
<b>Special Education</b>	
<b>Special Education Enrollment and Tuition in BOCES Programs.....</b>	<b>5</b>
<b>State Testing Program.....</b>	<b>6-7</b>
<b>Professional Development.....</b>	<b>8</b>
<b>Technology Services.....</b>	<b>9</b>
<b>School Library System Services.....</b>	<b>10</b>
<b>2006-2007 Expenses.....</b>	<b>11</b>

Prior editions of the BOCES Report Card included other data representing information on component districts.

The following data were not included in this report.

- State Testing Program for All Component Districts
- Graduation Results
- Regents Examinations

**Albany-Schoharie-Schenectady-Saratoga BOCES**  
**019000000000**

**Component Districts**

- Berne-Knox-Westerlo Central School District
- Bethlehem Central School District
- Burnt Hills-Ballston Lake Central School District
- Cobleskill-Richmondville Central School District
- Cohoes City School District
- Duanesburg Central School District
- Green Island Union Free School District
- Guilderland Central School District
- Maplewood School District
- Menands Union Free School District
- Middleburgh Central School District
- Mohonasen Central School District
- Niskayuna Central School District
- North Colonie Central School District
- Ravena-Coeymans-Selkirk Central School District
- Schalmont Central School District
- Schenectady City School District
- Schoharie Central School District
- Scotia-Glenville Central School District
- Sharon Springs Central School District
- Shenendehowa Central School District
- South Colonie Central School District
- Voorheesville Central School District
- Watervliet City School District

**Non- Component Districts**

- Albany City School District

## Career & Technical Education (CTE)

BOCES CTE classes, offered primarily on a half-day basis, prepare high school students from component districts for skilled work force careers. Most CTE programs require two years to complete. *Data Source: BOCES Survey*

Number of 11<sup>th</sup>/12<sup>th</sup> grade students enrolled in a CTE two-year sequence:

First-year students .....  
 Second-year students .....  
 Second-year students completing .....

General Education Students	Students with Disabilities	General Education Students	Students with Disabilities
2005-06	2005-06	2006-07	2006-07
509	261	330	266
259	154	181	149
235	139	169	130

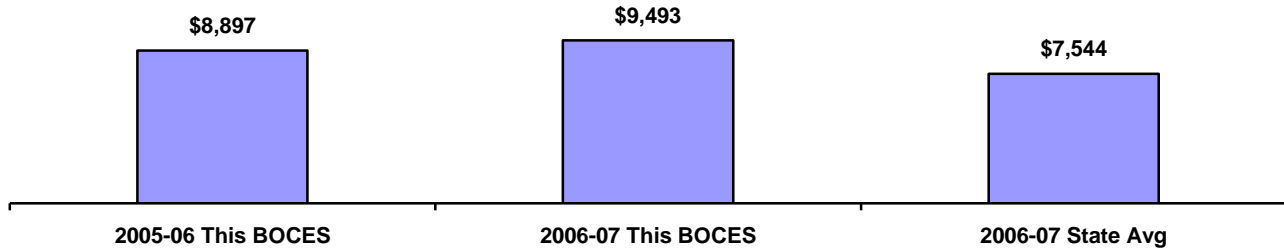
Number of 11<sup>th</sup>/12<sup>th</sup> grade students enrolled in one-year programs:

“New Vision” .....  
 Other one-year programs .....

50	0	56	0
50	10	101	55

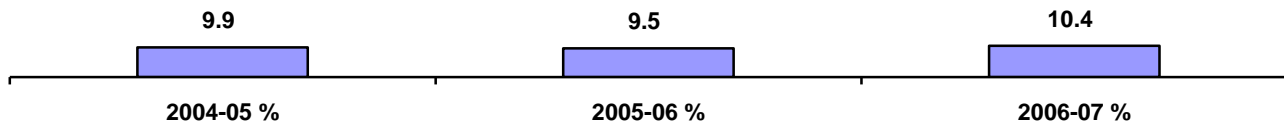
### Tuition Per Student for CTE Programs

*Data Source: 602 Report*



### \*Number Enrolled in CTE Programs as a Percent of all Juniors and Seniors in Component District High Schools

*Data Source: BOCES Survey and Basic Education Data System*



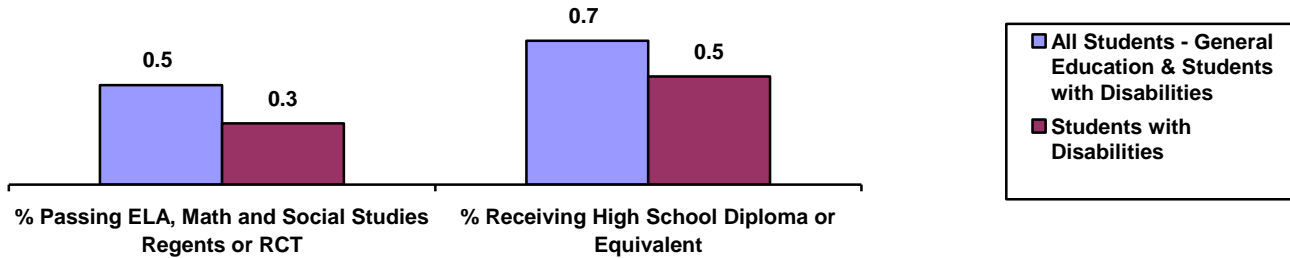
\* **Data Include General Education and Students with Disabilities.** *Data Source: BOCES Survey and Basic Education Data System*

\*\* **Data does not include** Albany City School District 11<sup>th</sup> and 12<sup>th</sup> grade enrollment. Albany City School District is a non-component

\*\*\***Total number of junior/senior students in components was extracted from the Data Warehouse on 3/7/2008.**

## Performance of Career & Technical Education (CTE) Students Who Graduated in 2006

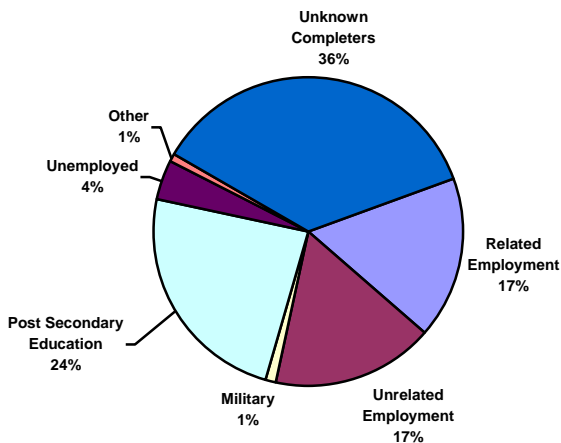
BOCES collects student performance data from component districts for students who participate in CTE BOCES programs. The data in the chart are based upon total program completers (general education and students with disabilities.) *Data Source: CTEDS-2*



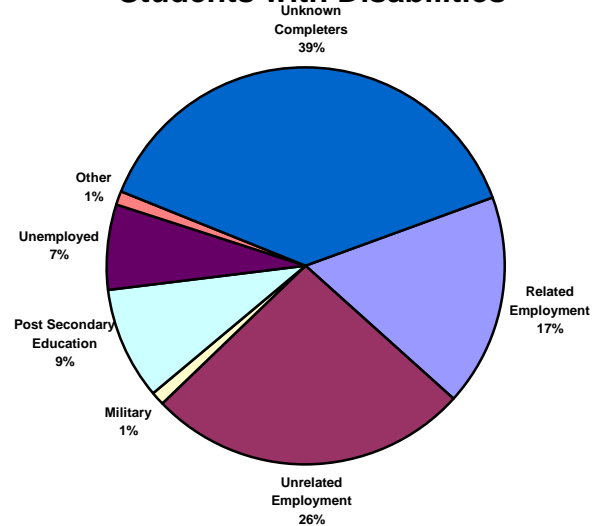
## Status of Career and Technical Education (CTE) Students Who Graduated in 2006

BOCES Surveys CTE graduates within one year after program completion to determine if they are employed or continuing their education. *Data Source: CTEDS-2 Report*

**All Graduates (General Education and Students with Disabilities)**

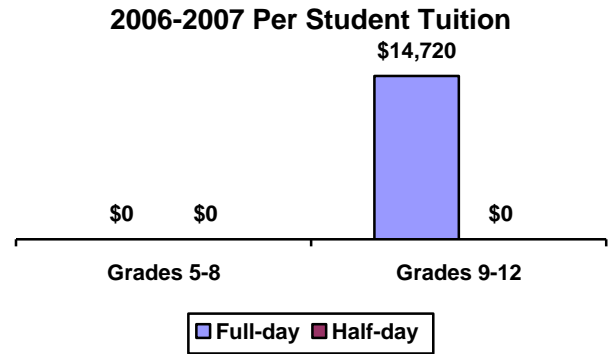
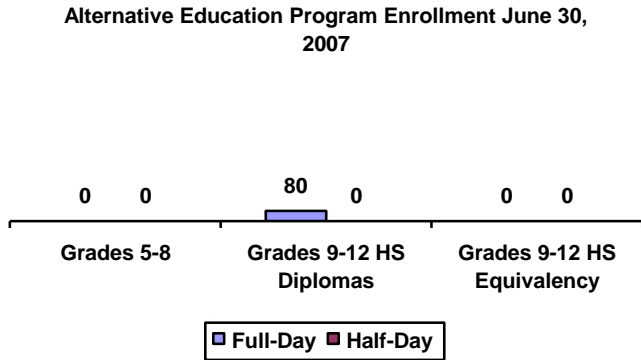


**Students with Disabilities**



## Alternative Education

BOCES operates full-day and/or half-day programs for general-education students who have been identified as having special needs not being met in school district programs. Programs may include academics, vocational skills, work-study, specialized activities or a combination of these. The BOCES Report Card includes alternative education program enrollment and outcome data for students in grades 5 through 8, as well as students in programs leading to high school diplomas or high school equivalency diplomas. *Data Source: BOCES Survey*



## Alternative Education Outcomes

The objective of the alternative education program is to retain students until they graduate or return to a regular school setting. Students counted as leaving programs may have done so for a variety of reasons including relocation, medical problems, childcare, incarceration or entering other education programs. *Data Source: BOCES Survey*

Number of students who:.....	Grades 5-8		Grades 9-12 Programs Leading to HS Diploma		Grades 9-12 Programs Leading to HS Equivalency Diplomas	
	Full-day	Half-day	Full-day	Half-day	Full-day	Half-day
returned to a school district program .....	0	0	14	0	0	0
remained in the BOCES program .....	0	0	36	0	0	2
left the program and did not enter another district or BOCES program (dropouts) .....	0	0	4	0	0	1
are waiting for GED exam results .....					0	0
received high school diplomas .....			26	0		
received high school equivalency diplomas ...					0	12

## Adult Career and Technical Education (CTE)

Adult CTE programs enhance academic and workplace skills and enable participants to gain employment or career advancement. *Data Source: Adult Allies*

	This BOCES		Statewide Average
	Count	Percentage	Percentage
<b>2005-06 Adult CTE Program Results</b>			
All CTE Programs			
Number Enrolled	2		
Number who Left Prior to Completion	0	0.0%	17.2%
Number who Completed	2	100%	73.6%
Completed and Status Known	2	100%	71.3%
Completed and were Successfully Placed*	2	100%	90.6%
Non-Traditional Programs			
Under-Represented Gender Members Enrolled	0	0.0%	10.1%
Under-Represented Gender Members Who Completed	0	0.0%	9.4%

\* Successfully Placed means placed in employment, the military or in additional education.

## Adult Basic Education

Based on data reported for the National Reporting System (NRS) for adult education programs, enrollment in adult basic education programs for 2006-2007 was 977.

### Educational Gain

Under the NRS, educational gain is the primary goal for students in adult beginning/intermediate programs, adult secondary (low) programs, and in English for speakers of other languages programs. Students are counted as achieving educational gain if they exceed established reference points in their standardized test scores between enrollment and re-testing.

Educational Program	Enrollment			Educational Gain					
	2004-05	2005-06	2006-07	2004-05		2005-06		2006-07	
					Percent		Percent		Percent
Adult Beginning/Intermediate	583	530	567	0	26%	0	27%	222	36.5%
Adult Secondary (Low)	91	66	36	0	25%	0	21%	13	36.1%
ESOL	295	178	204	0	27%	0	34%	110	57.1%

### Other Outcomes (2003-04 through 2006-07)

The following outcome measures are consistent with the National Reporting System (NRS) for adult education. Students in adult secondary (high) programs are considered to have a primary goal of obtaining a secondary or high school equivalency diploma. For all other outcomes, the student achievements correlate to the students indicating those goals at intake.

Other Outcomes	Students with Goal			Students Achieving Goal					
	2004-05	2005-06	2006-07	2004-05		2005-06		2006-07	
					Percent		Percent		Percent
Entered employment	179	156	70	0	86%	0	40%	44	78.6%
Retained employment	125	325	70	0	90%	0	64%	42	53.0%
Obtained a secondary or high school equivalency diploma	159	47	68	0	82%	0	28%	59	86.7%
Entered post-secondary education or training	125	34	52	0	57%	0	25%	35	97.2%

## Special Education Enrollment and Tuition

When placing students, districts select among classrooms with different student/staff ratios consistent with each student's Individualized Education Program (IEP). The following are nine of the alternatives:

- |   |   |
|---|---|
| 12 students per teacher plus two paraprofessionals (12:1:2) | 8 students per teacher plus 2 paraprofessionals (8:1:2)   |
| 12 students per teacher plus one paraprofessional (12:1:1)  | 8 students per teacher plus 1 paraprofessional (8:1:1)    |
| 9 students per teacher plus 3 paraprofessionals (9:1:3)     | 6 students per teacher plus two paraprofessionals (6:1:2) |
| 9 students per teacher plus 2 paraprofessionals (9:1:2)     | 4 students per teacher plus two paraprofessionals (4:1:2) |
| 8 students per teacher plus 3 paraprofessionals (8:1:3)     |   |

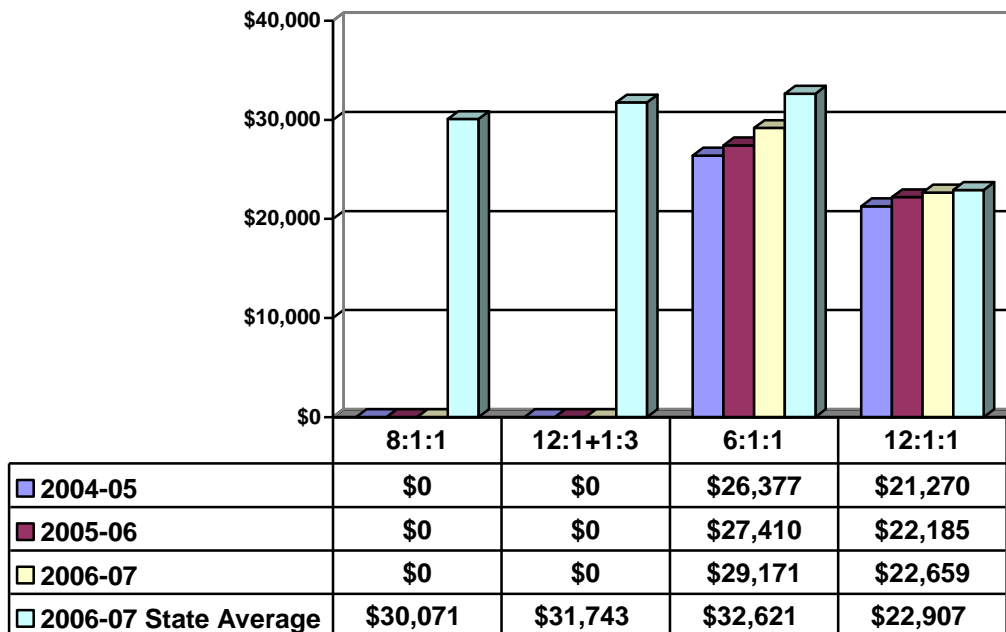
An addendum of enrollment and tuition information will be attached to this report if this BOCES provides other options of student/staff ratios.

Tuition rates exclude the costs of related services, preschool and summer school programs. BOCES with multiple tuition rates for a program have calculated an average rate. *Data source: 602 Report*

### Enrollment Trends

	2004-05	2005-06	2006-07
4:1:2	27	32	35
6:1:2	133	144	139
8:1:1	21	22	24
8:1:2	44	41	37
8:1:3	13	14	11
9:1:2	109	123	128
9:1:3	104	116	120
12:1:1	134	134	127
12:1:2	200	190	156

### Tuition Rates Per Student 2004-05 through 2006-07





## State Testing Program 2006-2007 School Year

These data are results of State assessments for students enrolled in BOCES programs.

Data Source: NERIC

State Assessment	Counts of Students Tested					Percentage of Students Tested		No Valid Score
	Level 1	Level 2	Level 3	Level 4	Total	Level 2-4	Level 3-4	
						Percent	Percent	
Grade 3 English Language Arts	16	3	2	0	21	23.8%	9.5%	0
Grade 4 English Language Arts	16	8	6	0	30	46.7%	20.0%	0
Grade 5 English Language Arts	13	13	4	0	30	56.7%	13.3%	0
Grade 6 English Language Arts	12	14	2	0	28	57.1%	7.1%	0
Grade 7 English Language Arts	30	29	5	2	66	54.5%	10.6%	0
Grade 8 English Language Arts	24	25	6	0	55	56.4%	10.9%	0
Grade 3 Mathematics	8	6	7	0	21	0.0%	0.0%	0
Grade 4 Mathematics	11	11	8	0	30	63.3%	26.7%	0
Grade 5 Mathematics	21	7	6	0	34	38.2%	17.6%	0
Grade 6 Mathematics	13	12	3	0	28	53.6%	10.7%	0
Grade 7 Mathematics	37	25	4	2	68	45.6%	8.8%	0
Grade 8 Mathematics	33	15	7	0	55	40.0%	12.7%	0

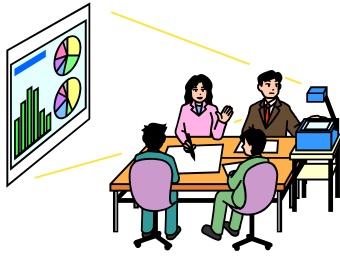
Level 4	These students <b>exceed the standards</b> and are moving toward high performance on the Regents examination.
Level 3	These students <b>meet the standards</b> and, with continued steady growth, should pass the Regents examination.
Level 2	These students <b>need extra help</b> to meet the standards and pass the Regents examination.
Level 1	These students have <b>serious</b> academic deficiencies.

**Performance of Students with Severe Disabilities on the  
New York State Alternate Assessment (NYSAA)  
2006-2007 School Year**

Data Source: NERIC

State Assessment	Counts of Students Tested					Percentage of Students Tested		No Valid Score
	Level 1	Level 2	Level 3	Level 4	Total	Level 2-4	Level 3-4	
						Percent	Percent	
Grade 3 English Language Arts	1	2	1	7	11	90.9%	72.7%	0
Grade 4 English Language Arts	0	1	1	7	9	100%	88.9%	1
Grade 5 English Language Arts	0	0	2	5	7	100%	100%	0
Grade 6 English Language Arts	1	1	1	4	7	85.7%	71.4%	3
Grade 7 English Language Arts	0	1	0	13	14	100%	92.9%	0
Grade 8 English Language Arts	0	0	1	9	10	100%	100%	0
High School English Language Arts	0	2	6	12	20	100%	90%	0
Grade 3 Mathematics	0	0	3	0	8	100%	100%	0
Grade 4 Mathematics	1	2	2	4	9	88.9%	66.7%	1
Grade 5 Mathematics	1	0	1	5	7	85.7%	85.7%	0
Grade 6 Mathematics	0	1	2	5	8	100%	87.5%	1
Grade 7 Mathematics	0	2	2	10	14	100%	85.7%	0
Grade 8 Mathematics	0	0	2	8	10	100%	100%	0
High School Mathematics	0	5	4	11	20	100%	75%	0

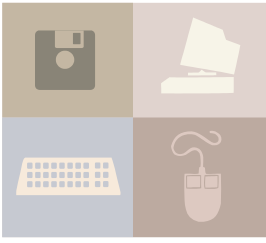
Level 4	These students <b>exceed the standards</b> and are moving toward high performance on the Regents examination.
Level 3	These students <b>meet the standards</b> and, with continued steady growth, should pass the Regents examination.
Level 2	These students <b>need extra help</b> to meet the standards and pass the Regents examination.
Level 1	These students have <b>serious</b> academic deficiencies.



## Professional Development 2006-2007 School Year

Data Source: BOCES Survey

BOCES provided training for a minimum of one or more full instructional days in the following areas:	Number of Participants:				
	Districts	Teachers	Principals	Paraprofessionals	Other
Site Based Educational Planning	2	150	4	10	6
District Based Educational Planning	1	7	1	4	3
High School Graduation Requirements	0	0	0	0	0
Learning Standards (ELA, MST, etc.)	65	488	48	0	0
Data Management and Analysis	31	86	36	0	49
Integrating Technology into Curricula & Instruction	18	1,485	68	175	56
Interdisciplinary Teaching (including integration of career technology & academics)	13	27	0	0	0
Middle Level Education Academic and Youth Development	14	87	0	0	0
Career and Technical Education	0	94	13	25	0
Instructional Strategies	79	1225	44	96	3
Parent Training	4	150	17	22	398
Special Education Issues	49	646	26	343	7
Leadership Training	0	18	59	0	72
Special Education Training Resource Center (SETRC)	16	400	20	185	0
Bus Driver	10	0	0	0	101
Value Added	10	70	49	0	15



## Technology Services 2006-2007 School Year

*Data Source: BOCES Survey*

<b>BOCES provides technology services to district and BOCES staff and students.</b>	<b>Districts</b>	<b>Professionals Teachers Administrators</b>	<b>Students</b>
<b>Distance Learning</b>	10	39	525
<b>Instructional Computing</b>	14	1,736	0
<b>Computer/Audio Visual Repair</b>	0	0	
<b>Library Automation/Software</b>	11	2,049	25,461
<b>LAN Installation/Support</b>	8	123	0
<b>Distributed Process Technicians</b>	14	160	0
<b>Guidance Information</b>	25	80	0
<b>Administrative Computer Services</b>	25	1,337	
<b>Administrative Training</b>	21	136	

**\*Numbers reflect NERIC services provided to Capital Region BOCES schools only.**

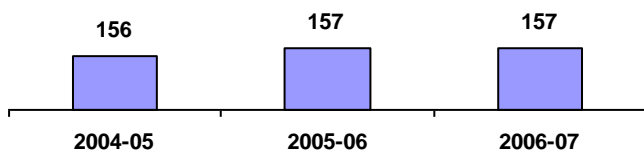


## School Library Systems (SLS)

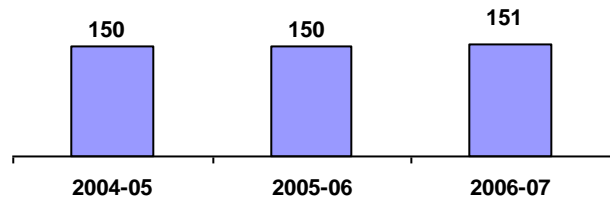
School Library Systems are state-aided programs set forth in Education Law and regulations of the Commissioner of Education. Each BOCES acts as the educational agency that sponsors the program to provide vital library and information resources to public and nonpublic schools.

Each system operates under an approved long range plan of service. Some of the key functions of SLS are: to provide leadership and training through professional development activities; enrich the NYS Learning Standards by providing information literacy awareness and skills; facilitate resource-sharing among its member school libraries; promote advances in technology for information storage and retrieval; focus on cooperative collection development of member school library materials; address the information needs of special client groups; and participate in regional library issues with the public, academic, special and other school libraries. Students, teachers and administrators in each BOCES service area benefit from the programs and services of the school library system. *Data Source: SLS Annual Report*

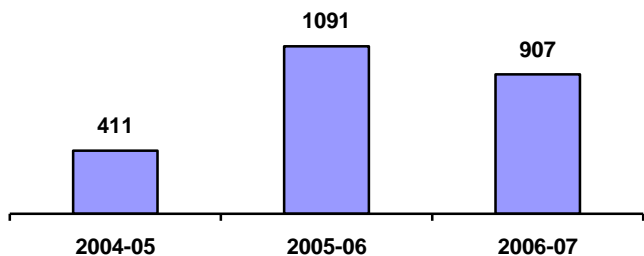
**Number of Library Media Centers**



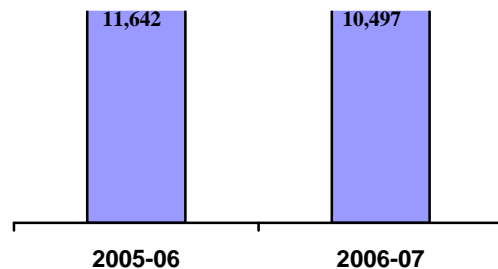
**NOVEL Ready Libraries**



**Number of Participants at Professional Development Workshops**



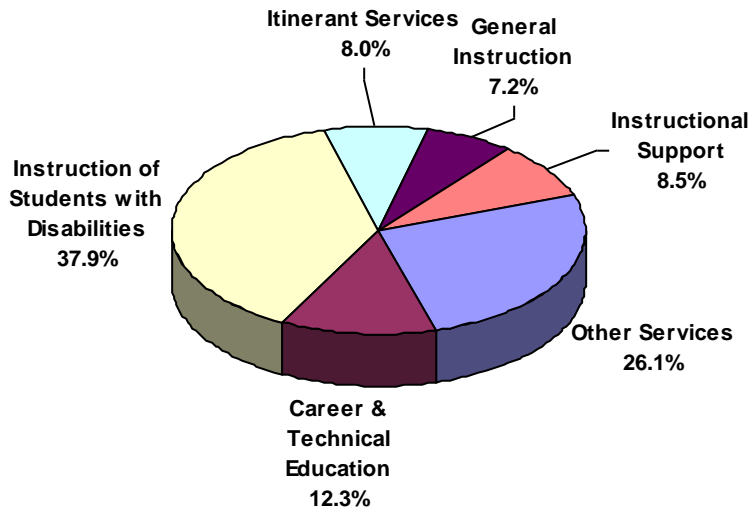
**Consulting Reference and Technical Assistance Services by SLS Staff**



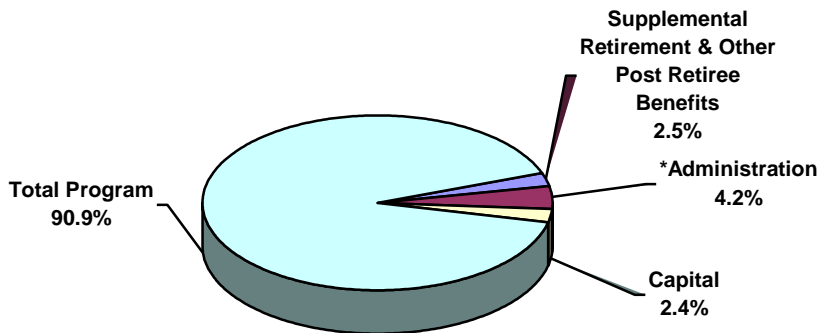
## 2006-2007 Expenses

Data Source: SA111, schedule 2A

Administrative Expenses (Excluding Supplemental Retirement & Other Post Retirement Benefits) .....	\$	3,718,973
Supplemental Retirement & Other Post Retirement Benefits.....	\$	2,235,073
Capital Expenses .....	\$	2,151,172
<b>Total Program Expenses .....</b>	<b>\$</b>	<b>81,873,505.00</b>



Total Expenses.....	\$	89,978,723
---------------------	----	------------



\*Excludes Supplemental & Other Post Retirement Benefits